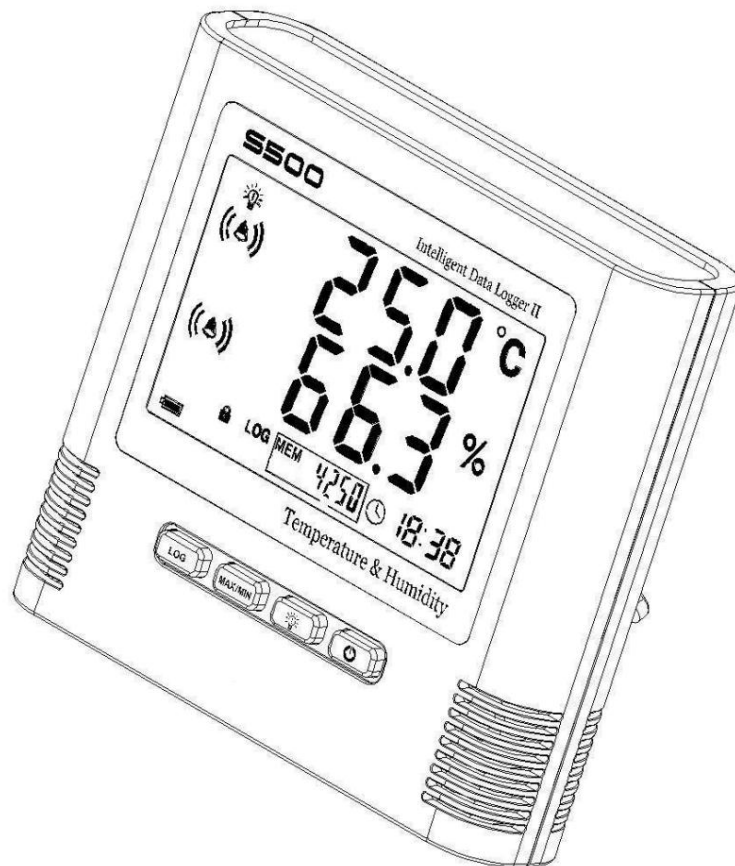


**TECPEL®**



TR-S500

Temperature and humidity recorder instructions

Table of contents

Chapter 1 Product Introduction

1.1 Product Features..... 3

1.2 Scope of use..... 3

1.3 Performance Parameters..... 3

1.4 Appearance Description of Recorder..... 4

1.5 LCD display screen symbols..... 5

1.6 Button Function Description..... 6

Chapter 2 Software Usage Guide

2.1 USB Driver Installation..... 7

2.2 Using TOANALYZER Software.....7

Chapter 2 Precautions for Use

3.1 Notes..... 11

3.2 Frequently Asked Questions.....11

## 1.1 Product Features

Use imported original packaging and calibration integrated temperature and humidity sensor

Built-in memory capacity, can store 43,000 sets of temperature and humidity data

High accuracy in measuring temperature and humidity

Temperature and humidity data and time are displayed simultaneously, and the button operation is simple and convenient

Built-in sound and light alarm, over-limit alarm function. Simple and elegant appearance, desktop and wall-mounted

Professional analysis software is easy to use and has multiple data protections to ensure that data will never be lost

## 1.2 Scope of use

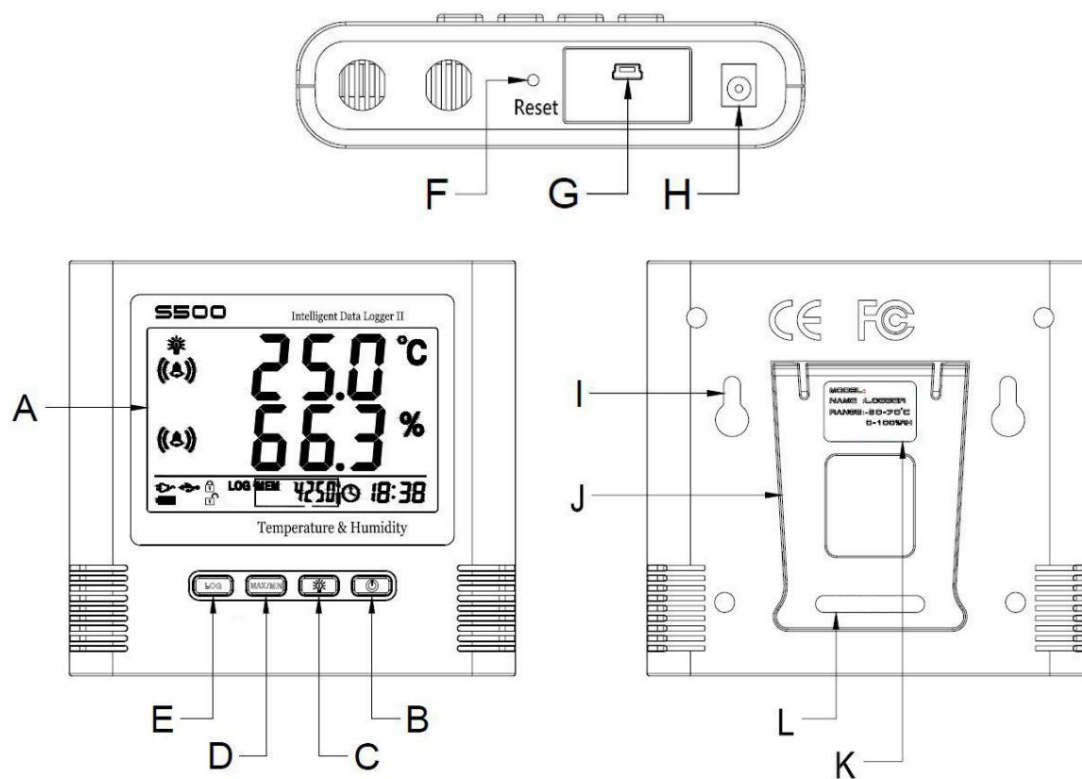
Widely used in medicine, electronics, food, transportation, warehousing, scientific research institutes, meteorology, textiles and commercial buildings, professional laboratories,

Museums, libraries, meteorological departments and other fields

## 1.3 Performance Parameters

model	Measuring range:	Measurement accuracy	Sensor type	Recording capacity
TR-S500	-40~85°C 0~100%RH	±0.5°C/±5%RH	Temperature + humidity, external cable Line length: 3 meters	43,000 records

## 1.4 Recorder Appearance Description



LCD display (A)

On/Off button (B)

Backlight button (C)

Maximum or minimum value and normal state switch button (D)

Turn recording on or off (E)

Recorder restart button (F)

USB communication port (G)

DC 12V jack (H)

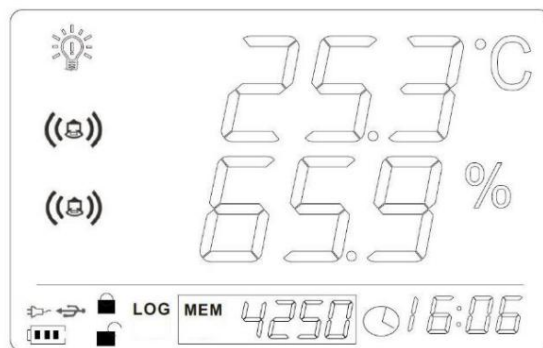
Hanging hole (I)

Bracket (J)

Model mark (K)

Serial Number (L)

## 1.5 LCD display symbol description



icon	illustrate
	Backlight logo
	When the instantaneous temperature and humidity values exceed the set upper and lower limits, an alarm symbol will be displayed.
	Temperature display symbol
	Humidity display symbol
	Battery level indicator: When the area inside this icon is black, it means the battery is fully charged. If it is empty, it means the battery is low and the battery should be replaced.
	Button lock mark/button unlock mark
	This symbol indicates that it has been connected to a DC 12V external power supply.
	This symbol indicates that the instrument has been connected to the computer and data can be downloaded.
<b>LOG</b>	This symbol shows that the instrument has entered the recording state.
	This symbol shows the recording data capacity, indicating that the instrument is in normal use. 4250 is the number of recording data capacity.
	This symbol indicates that the instrument only displays the highest temperature and humidity values.
	This symbol indicates that the instrument only displays the lowest value of temperature and humidity.
	Year, month and time are displayed alternately. When the year is displayed for 15 seconds, it will automatically switch to the month display for 15 seconds, and then switch to the time display for 30 seconds.

## 1.6 Button Function Description

A blue rounded rectangular button with the word "LOG" in white capital letters.

Record function key, turn on or off the record function.

(1) In non-recording mode (standby), press once to enter recording mode. The LCD will display the LOG symbol and the number of memory groups.

(2) In the recording mode, press this button once to exit the recording mode. The LCD will not display the LOG symbol and the number of memory groups.

A blue rounded rectangular button with the text "MAX/MIN" in white capital letters.

Display the maximum and minimum values of the record button

In normal working mode, press this key to view the maximum/minimum measurement value.



Backlight switch button

In normal working mode, press this button to turn on the backlight.



Power button

In the off state, press this button to turn on the instrument. In the on state, turn off the recording function first, then press this button to turn off the instrument.

Note: Press

A blue rounded rectangular button with the text "MAX/MIN" in white capital letters.

, you can lock or unlock the button operation.

### 2.1 USB driver installation

Insert the standard software CD into your computer and open the TR-S500 folder.

2.1.1 Select the driver according to the operating system. If it is a Win64 operating system, please install the "USB\_Driver for

Win7x64" If it is a Win32 operating system, please install "USB\_Driver" and click to start installing the driver.

Mode.

2.1.2 Click LogPro\_TW to execute the main program.

### 2.2 Software Instructions



Use the connection symbol to connect to the device



#### 1. 使用連線符號，與裝置連結。

驅動程式如有正確安裝，軟體將會偵測到正確的連接埠。



Use the connection symbol to connect to the device.

If the driver is installed correctly, the software will detect the correct port.



#### 2. 點選 屬性 打開記錄器相關設定。

此頁面中可設定 儲存間隔 與 高低警報 等參數，設備序號也將顯示在這。

2. Click "Properties" to open the recorder settings

Properties

On this page, you can configure parameters such as the storage interval and high/low alarms, and the device serial number will also be displayed here.

**讀取裝置資訊** (Read Device Information)

**上傳設定參數** (Upload Setting Parameters)

**裝置名稱** (Device name)  
可輸入供識別的名稱，方便日後辨識。

**量測間隔** (Measre Interval)  
記錄器每次感應溫濕度的間隔。

**記錄間隔** (recording interval)  
寫入記憶體的時間間隔，不可小於量測間隔。

**溫度單位** (TEMP. DEGREE Setting)  
顯示的溫度單位，可設定攝氏與華氏。

**啟動模式** (Start Mode)  
預設為手動按下OK按鍵後開始記錄。

**延遲時間** (Delay time Setting)  
紀錄器啟動後，需經過多少時間開始記錄。

**警報設定** (Alarm UP/LOW Level Setting)  
設定上下限警報啟動的範圍。

**偏差補正** (Deviation Compensation)  
量測數值補償。

Basic	
名稱	usb_logger
類別	Data Logger
型號	TH200D
序號	H201403340
量測間隔(單位：秒)	10
紀錄間隔(單位：秒)	60
日誌	21
總計	43000
溫度單位	C
Log Mode	
啟動模式	Start Now
延遲時間	0
Alarm Threshold	
CH1 High	90
CH1 Low	-30
CH2 High	99
CH2 Low	0
Offset	
CH1	0.0
CH2	0.0

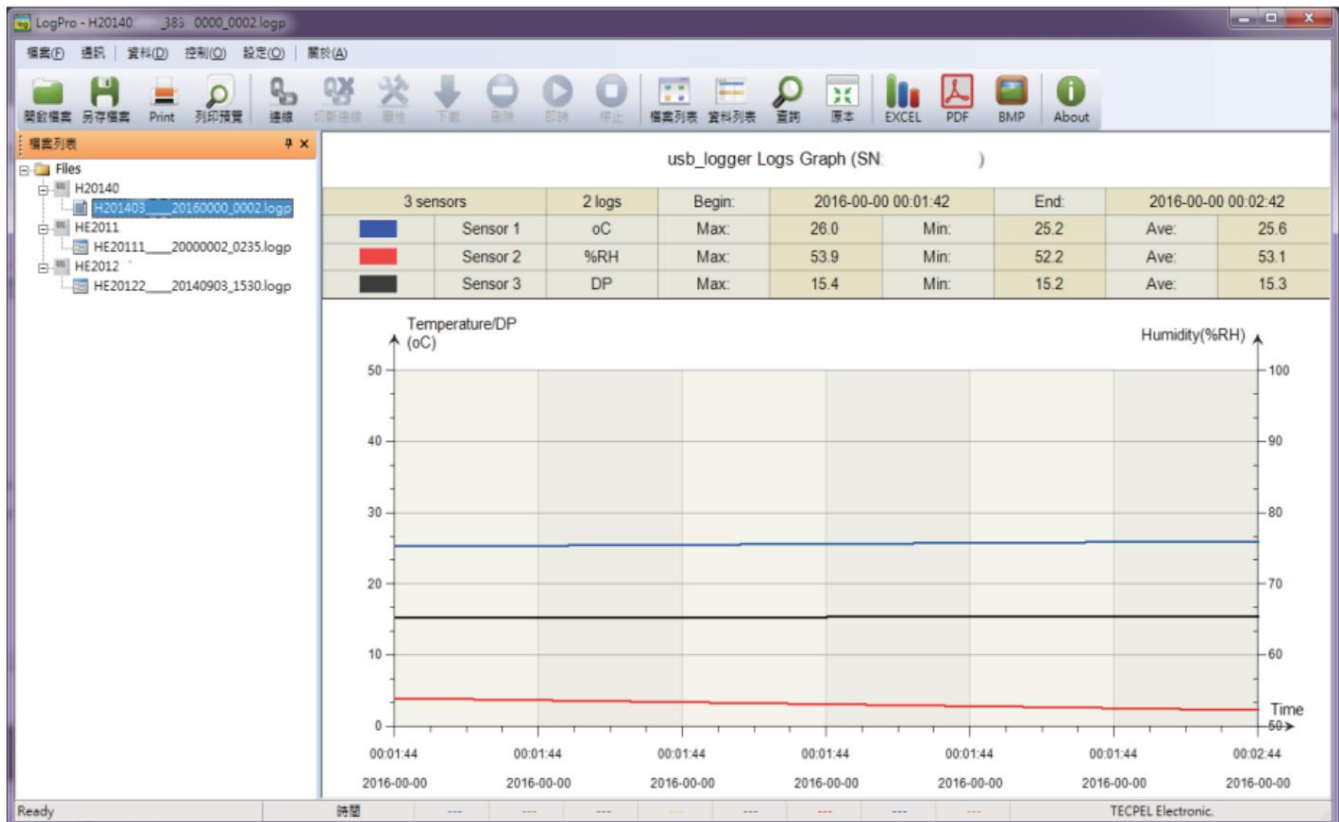
Deviation Compensation



Click Download to transfer the data from the logger to your computer.  
Once the download is complete, the data will be stored in the Logfiles folder within the installation folder.



3. 點選 下載 將記錄器內的資料傳輸至電腦。  
下載完成後，資料將會被儲存在安裝資料夾內的 Logfiles 資料夾。



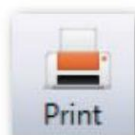
#### Storage and Printing Instructions



1. 開啟檔案。  
開啟記錄器資料檔案。  
可開啟副檔名為 LOGP 的資料檔



2. 另存檔案。  
資料在下載時就已經儲，另存功能是指將資料轉存至其他地方。



3. 列印。  
將曲線圖資料畫面列印出來。



4. 列印預覽。  
預覽將要列印的曲線圖畫面。

- 1.Open File.  
Opens a logger data file.  
Can open files with the extension LOGP.  
2.Save File.  
Data is saved when it is downloaded. The Save As function allows you to transfer the data to another location.  
3.Print.  
Prints the graph data screen.  
4.Print Preview.  
Previews the graph screen to be printed.



軟體安裝完成前，請勿將記錄器接至電腦 USB 插槽，避免驅動程式載入錯誤。

軟體部分有 驅動程式 與 記錄器程式 兩個，第一次使用時都需安裝，之後軟體升級就無須重新安裝驅動程式。



**1. EXCEL 檔案格式。**

資料表格式的檔案，可用於微軟辦公室軟體 Office 系列使用。



**2. PDF 檔案格式。**

相當普及的跨平台文書檔案格式，擁有眾多免費的軟體可支援。



**3. BMP 檔案格式。**

相當普及的跨平台文書檔案格式，擁有眾多免費的軟體可支援。

Do not connect the recorder to a computer USB port before the software installation is complete to avoid driver loading errors.

The software consists of two parts: the driver and the recorder program.

Both need to be installed for the first time. Subsequent software upgrades do not require driver reinstallation.

#### EXCEL

**1. EXCEL file format.**

Spreadsheet-style files, suitable for use with Microsoft Office software.

#### PDF

**2. PDF file format.**

A popular cross-platform document file format with extensive free software support.

#### BMP

**3. BMP file format.**

A popular cross-platform document file format with extensive free software support.

## Chapter 3 Precautions for Use

### 3.1 Notes

The waterproof grade of this recorder is IP34. If there is moisture on the shell, do not connect it to the USB port to prevent the electronic circuit from being shorted due to water.

A short circuit may damage the instrument.

This recorder uses ABS engineering fireproof plastic shell to prevent corrosion of the shell by acids, alkalis and other chemicals.

If a fault occurs, it must be repaired by authorized professionals. Do not repair or modify it by yourself.

The 9V battery configured in this instrument cannot be charged or short-circuited, otherwise it may cause danger. Please dispose of the used battery properly.

Management, protect the environment.

### 3.2 Common Faults

Dim LCD display

Cause: The battery is low or the ambient temperature is too low or too high.

Solution: Replace the battery. If it is caused by the ambient temperature, please take the recorder out of the environment immediately to avoid damage to the recorder.

scratch.

LOG symbol disappears

Cause: When the battery power is too low, there will not be enough power to maintain the recording function on the recorder. Solution: Replace the battery.

The FULL symbol appears at the bottom of the display, indicating that the recorder is full of data. This is normal.

Solution: Connect the recorder to the software and delete the full data to restore it.